

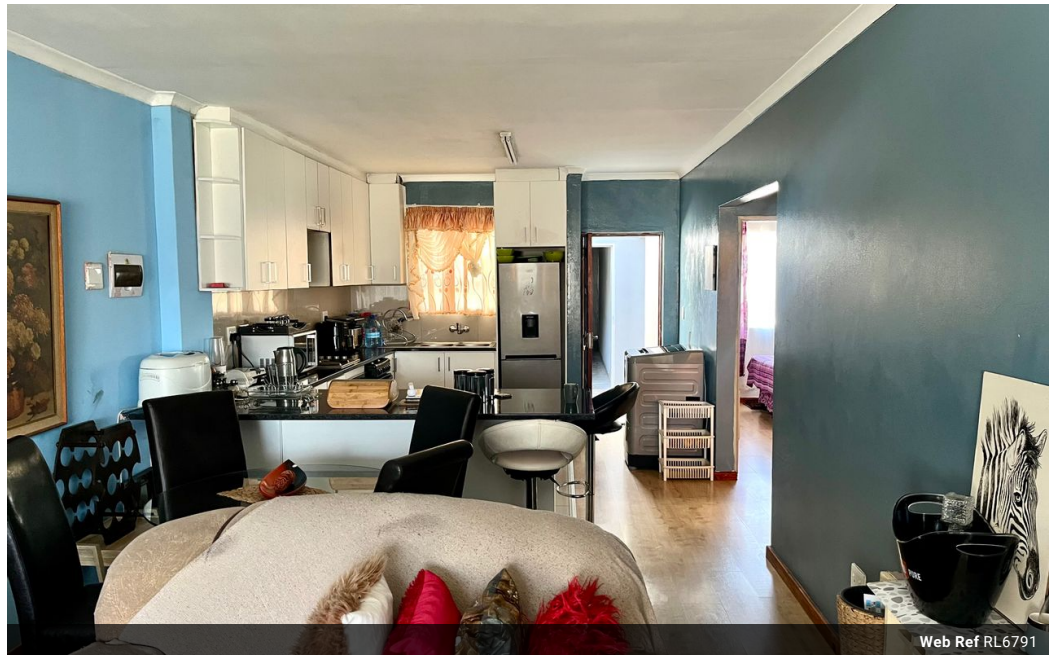


Kwame Nicol
0780531462
kwame@tfre.co.za

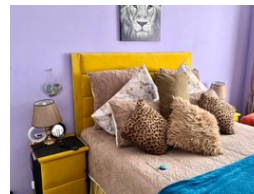
Contact TFRE Gqeberha

041 3602455

236 Cape Road
Mill Park
Gqeberha



Web Ref RL6791



R900,000

🛏 3 🚿 2 🏠 1

Monthly Bond Repayment R9,137.06

Calculated over 20 years at 10.75% with no deposit.

Transfer Costs R28,244.00 **Bond Costs** R21,450.00

These calculations are only a guide. Please ask your conveyancer for exact calculations.

New development!!

New Development. Close to Spar/Engen . Three beds .

Huge lounge, open plan kitchen

Single garage with space to park another car, yard for kids to play. Close to all amenities. Walk to the beach.

Every effort has been made to ensure the content of this advert is correct, however, no responsibility will be borne for any errors or omissions it may contain.

Features

Pets Allowed	Yes		
Interior		Exterior	
Bedrooms	3	Garages	1
Bathrooms	2	Carports / Parkings	1
Kitchens	1	Security	No
Recep. Rooms	1	Pool	No
Furnished	No	Views	False