



Desmeri Botha
0733617452
desmeri@tfre.co.za

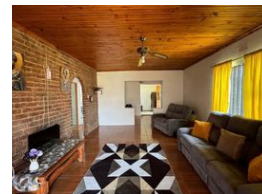
Contact TFRE Gqeberha

041 3602455

236 Cape Road
Mill Park
Gqeberha



Web Ref RL6622



R850,000

3 2

Monthly Bond Repayment R8,629.45

Calculated over 20 years at 10.75% with no deposit.

Transfer Costs R28,244.00 **Bond Costs** R21,450.00

These calculations are only a guide. Please ask your conveyancer for exact calculations.

Monthly Rates R467.9

Charming Family Home For Sale in Uitenhage Central – Prime Location!

This beautiful face brick/plastered home is perfectly situated in Uitenhage Central, just a stone's throw from shops, schools, and the heart of town.

Offering a warm and inviting atmosphere, this property is ideal for families looking for comfort and convenience.

Upon entering, you'll be welcomed by a spacious entrance hall that leads to a versatile dining room or study area, perfect for family meals or a home office setup.

This property features:

3 Spacious bedrooms with built-in cupboards.

The main bedroom includes an en-suite (toilet, basin, and shower).

Full family bathroom featuring a toilet, basin, shower, and bathtub.

Lounge with a stacker door opening to the backyard and braai area, perfect for entertaining.

Modern kitchen fitted with an oven and hob.

Combination of tiled and wooden flooring, adding warmth and...

Features

Pets Allowed Yes

Interior

Bedrooms	3
Bathrooms	2
Kitchens	1
Recep. Rooms	2
Furnished	No

Exterior

Security	No
Pool	No
Views	False

Sizes

Land Size	520m²
-----------	-------

