



Kobus Brits
0762297882
kobus@tfre.co.za

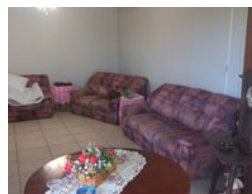
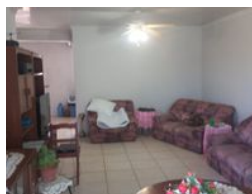
Contact TFRE Gqeberha

041 3602455

236 Cape Road
Mill Park
Gqeberha



Web Ref RL6780



R900,000

Monthly Bond Repayment R9,137.06

Calculated over 20 years at 10.75% with no deposit.

Transfer Costs R28,244.00 **Bond Costs** R21,450.00

These calculations are only a guide. Please ask your conveyancer for exact calculations.

Monthly Rates R750

🏠 3 🚿 1 🚗 2

Estate Late – Large Family Home

This well-located property offers comfortable family living with additional income potential. It features:

Main House:

Open-plan lounge and entertainment area with built-in braai, seamlessly connected to a dining area and kitchen with built-in cupboards.

Three bedrooms with built-in cupboards.

The bathroom includes a bath and basin, with a separate toilet for convenience.

Easy access to both the front and back yards from the living space.

Flatlet:

One bedroom with built-in cupboards and patio doors opening to the front yard.

Open-plan lounge and kitchen area, also fitted with built-in cupboards.

Features

Pets Allowed Yes

Interior

Bedrooms	3
Bathrooms	1
Kitchens	1
Recep. Rooms	3
Furnished	No

Exterior

Garages	2
Carports / Parkings	1
Security	No
Pool	No
Views	False

Sizes

Land Size	950m ²
-----------	-------------------

