

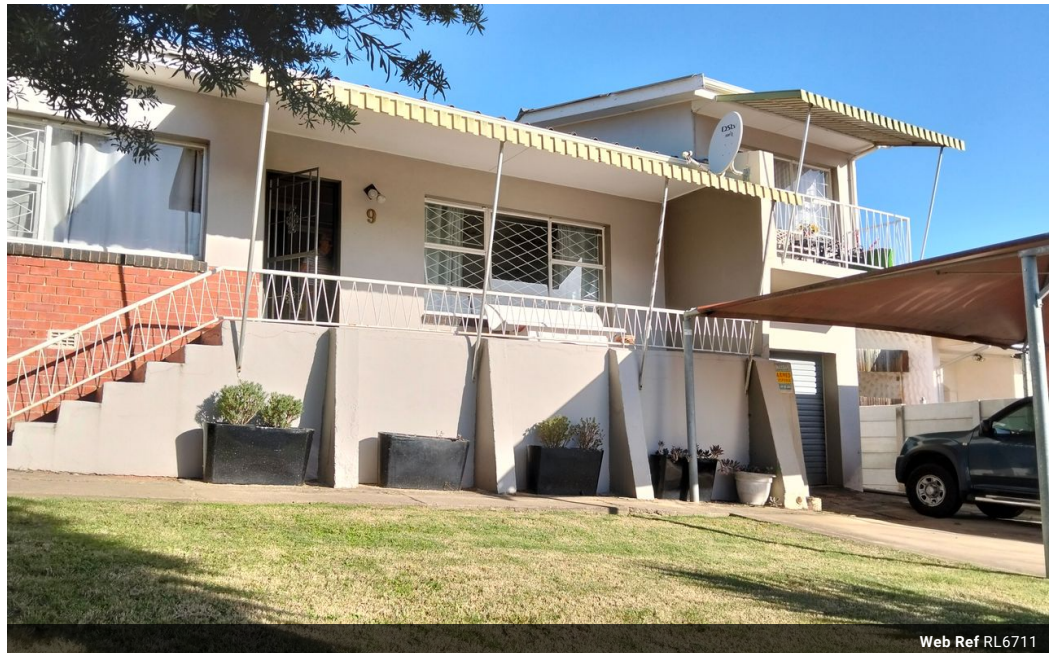


Desmeri Botha
0733617452
desmeri@tfre.co.za

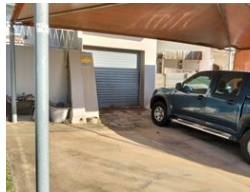
Contact TFRE Gqeberha

041 3602455

236 Cape Road
Mill Park
Gqeberha



Web Ref RL6711



R1,195,000

🛏 4 🚿 2 🏠 1

Monthly Bond Repayment R12,334.65

Calculated over 20 years at 11% with no deposit.

Transfer Costs R32,749.00 **Bond Costs** R25,220.00

These calculations are only a guide. Please ask your conveyancer for exact calculations.

Monthly Rates R877.9

Stunning family home For Sale with Breath taking views!

Nestled in the sought-after Fairbridge Heights, this charming home offers comfort, style, and spectacular sunset views over the Winterhoek mountains.

Features include:

Open-plan living area: Spacious lounge and dining area with wooden floors, leading to a well-equipped kitchen with a breakfast nook.

Bedrooms: 3 comfortable rooms with built-in cupboards and a modern wet-room-style bathroom.

Versatile 4th bedroom: With an en-suite bathroom and private balcony, ideal for guests, a home office, or a family room.

Outdoor living: Low maintenance garden, double carport/patio perfect for entertaining.

Extra conveniences: Single garage, double carport, outside laundry, and external toilet.

Bonus: Backup water supply and gas geyser for added efficiency and cost savings.

Every effort has been made to ensure the content of this...

Features

Pets Allowed		Yes			
Interior				Sizes	
Bedrooms	4			Land Size	10,606m²
Bathrooms	2				
Kitchens	1				
Recep. Rooms	2				
Furnished	No				
Exterior					
Garages	1				
Carports / Parkings	2				
Security	No				
Pool	No				
Views	False				

