



Shane Williams
0843075148
shane@tfre.co.za

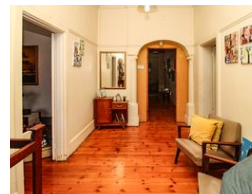
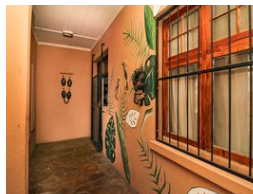
Contact TFRE Gqeberha

041 3602455

236 Cape Road
Mill Park
Gqeberha



Web Ref RL6730



R750,000

3 2

Monthly Bond Repayment R7,614.22

Calculated over 20 years at 10.75% with no deposit.

Transfer Costs R25,898.00 **Bond Costs** R19,565.00

These calculations are only a guide. Please ask your conveyancer for exact calculations.

Monthly Rates R550

Large Family Home!

Spacious Home with modern comforts.

This property offers a perfect blend of comfort, security, and style. Set on a generously sized, fully enclosed yard, this home is ideal for families or those who love entertaining.

Step inside to a welcoming entrance hall that flows into a warm and inviting lounge area, ideal for relaxing. The home features three bedrooms with built-in cupboards, including a main bedroom with an en-suite bathroom for added convenience.

The kitchen is fitted with built-in cupboards, offering ample storage and functionality.

The two bathrooms in total ensure ease for a growing family or guests.

Gleaming wooden floors throughout, adding elegance and charm, the air conditioner ensures comfort during hot summer days.

The entertainment area has an indoor braai and swimming pool, perfect for weekend braais...

Features

Pets Allowed		Yes			
Interior				Sizes	
Bedrooms	3	Carports / Parkings	2	Land Size	391m ²
Bathrooms	2	Security	Yes		
Kitchens	1	Dom. Accom.	1		
Recep. Rooms	2	Pool	Yes		
Furnished	No	Views	False		

