



**Vikki Hohana**  
0614449208  
vikki@tfre.co.za

Contact TFRE Gqeberha

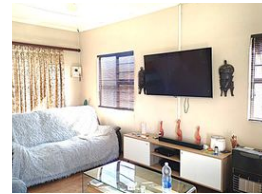
041 3602455

236 Cape Road  
Mill Park  
Gqeberha



SOLE MANDATE

Web Ref RL6787



**R295,000**

**Monthly Bond Repayment** R2,994.93

Calculated over 20 years at 10.75% with no deposit.

**Transfer Costs** R15,517.00 **Bond Costs** R10,985.00

These calculations are only a guide. Please ask your conveyancer for exact calculations.



## Beautiful and Modern Home For Sale

Step into a comfortable and convenient living with this charming 2-bedroom home, perfectly located in a vibrant and welcoming neighbourhood in Wells Estate.

Boasting a well-designed floor plan, this house makes the most of every square meter. offering a cosy yet functional living space ideal for young professionals, couples, or small families.

This home is set on a 200 square meter erf, giving you room to breathe and the potential to expand or create your own outdoor retreat. Whether you're envisioning a neat garden, a play area for your kids, or an entertainment patio, the space is yours to make it happen.

The home showcases neat and clean finishes throughout, ensuring a move-in-ready experience. It has a kitchen with built-in cupboards, tiled floors, and a stove, as well as a sizeable, tiled lounge area for relaxation and...

## Features

<b>Pets Allowed</b>	Yes			
<b>Interior</b>		<b>Exterior</b>		<b>Sizes</b>
Bedrooms	2	Security	No	Land Size
Bathrooms	1	Pool	No	200m²
Kitchens	1	Views	False	
Recep. Rooms	1			
Furnished	No			

