



**Thozama Nqini**  
0730315613  
thozama@tfre.co.za

Contact TFRE Gqeberha

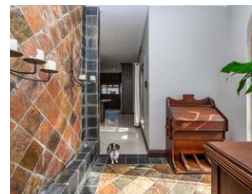
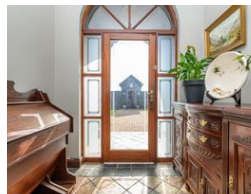
**041 3602455**

236 Cape Road  
Mill Park  
Gqeberha



SOLE MANDATE

Web Ref RL6640



**R2,990,000**

🛏️ 4 🚿 3 🏠 3

**Monthly Bond Repayment** R30,355.35

Calculated over 20 years at 10.75% with no deposit.

**Transfer Costs** R159,255.00 **Bond Costs** R42,185.00

These calculations are only a guide. Please ask your conveyancer for exact calculations.

**Monthly Rates** R2,455.1

## WELCOME TO THIS STYLISH AND CLASSY HOME WITH MORDEN FINISHES.

This home is everything you have been dreaming of and it ticks all the boxes!

As you enter the front gate, you are welcomed by a glass front door leading to the open-plan living areas, dining room, lounge and TV lounge.

To your right is a well-fitted office space with a sliding door to the courtyard, braai area, and standard-size pool.

The beautifully fitted kitchen has marble countertops, a gas stove, an under-counter oven, and ample storage space. The ceramic floor tiles help with easy maintenance and cleaning. The scullery has built-in cupboards and the laundry area has a door that leads out to the back and washlines.

The passage leads to the guest bedroom with an en-suite bathroom. Down the one left wing is the main bedroom with an en-suite bathroom and walk-in closet.

To the left is a linen cupboard with mirror...

## Features

**Pets Allowed** Yes

### Interior

|              |    |
|--------------|----|
| Bedrooms     | 4  |
| Bathrooms    | 3  |
| Kitchens     | 1  |
| Recep. Rooms | 3  |
| Studies      | 1  |
| Furnished    | No |

### Exterior

|          |       |
|----------|-------|
| Garages  | 3     |
| Security | Yes   |
| Pool     | Yes   |
| Views    | False |

### Sizes

|            |                   |
|------------|-------------------|
| Floor Size | 432m <sup>2</sup> |
| Land Size  | 812m <sup>2</sup> |

