



Steyn Marais
0817926588
steyn@tfre.co.za

Contact TFRE Gqeberha

041 3602455

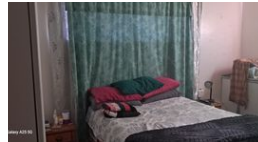
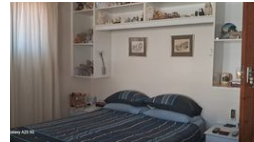
236 Cape Road
Mill Park
Gqeberha

SOLD



SOLE MANDATE

Web Ref RL6848



R950,000

Monthly Bond Repayment R9,644.68

Calculated over 20 years at 10.75% with no deposit.

Transfer Costs R30,412.00 **Bond Costs** R23,335.00

These calculations are only a guide. Please ask your conveyancer for exact calculations.

3 1

3 Bedroom home For Sale in Steytler Township, Port Elizabeth.

EXCLUSIVE SOLE MANDATE!!

This secure and neat home offers:
3 Bedrooms, lounge, kitchen and a modern bathroom.

Fully enclosed yard with remote access gate and double carport.
Manicured garden with wendy house used as tool shed
2 Water tanks, CCTV, pre-paid electricity.

2 bedroom flatlet can be used for granny or as an income generator.

Every effort has been made to ensure the content of this advert is correct, however, no responsibility will be borne for any errors or omissions it may contain.

Features

Pets Allowed Yes

Interior

Bedrooms	3
Bathrooms	1
Kitchens	1
Recep. Rooms	1
Furnished	No

Exterior

Carports / Parkings	2
Security	No
Pool	No
Views	False

Sizes

Land Size	545m²
-----------	-------

