

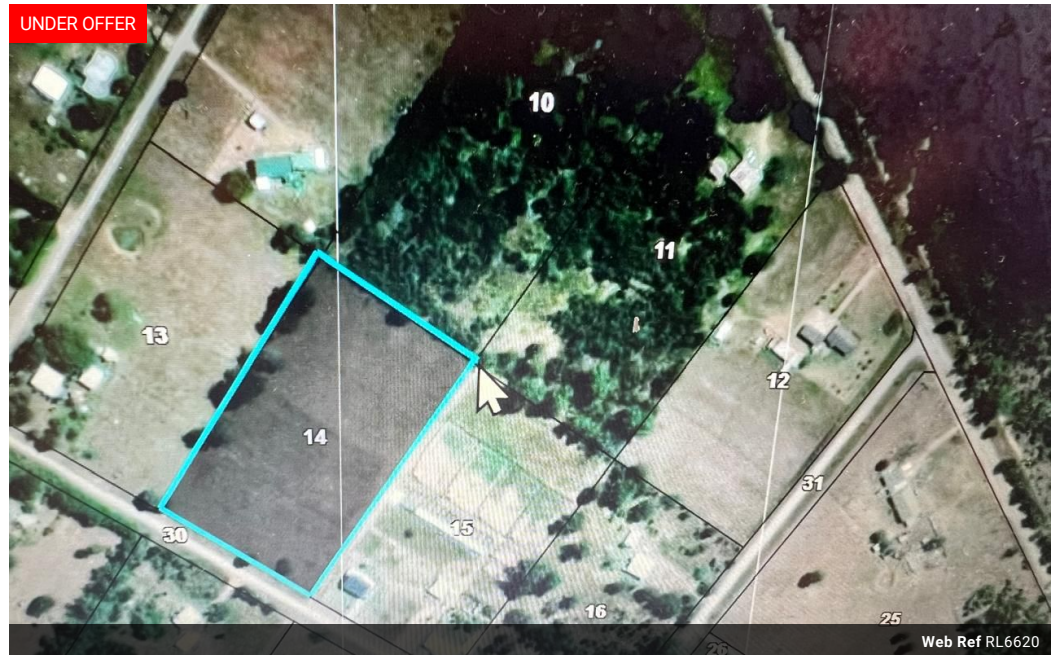


Graham White
0764886464
graham@tfre.co.za

Contact TFRE Gqeberha

041 3602455

236 Cape Road
Mill Park
Gqeberha



R435,000

Monthly Bond Repayment R4,490.02

Calculated over 20 years at 11% with no deposit.

Transfer Costs R17,928.00 **Bond Costs** R12,935.00

These calculations are only a guide. Please ask your conveyancer for exact calculations.

Vacant land (17 131m Sq.) Ideal for small farming and a Cozy relaxed life. Has many opportunities!

If you are looking for a piece of land of good size for small farming and to build a cosy home, where there is fresh air daily, and a very quiet and safe area...?? Then this is the Land that you have been looking for.

This property is 17 132m sq. (17.132 ha). The Land is flat and fenced off. The whole area was cleared and grass was planted for animal grazing.

This property is ready for small-scale Cattle, Sheep, Goat, Pig and Poultry farming Or vegetable farming.

BONUSES: - There are approved plans for a 2 bedroom house: * 2 large bedrooms. * 2 Bathrooms. * Lounge. * Large farm sized kitchen. * Very big semi-enclosed entertainment braai area. * Double garage that leads through the entertainment area into the house.

To top the approved home plans...!! is that the concrete shell foundations were already laid. All you need to do...

Features

