

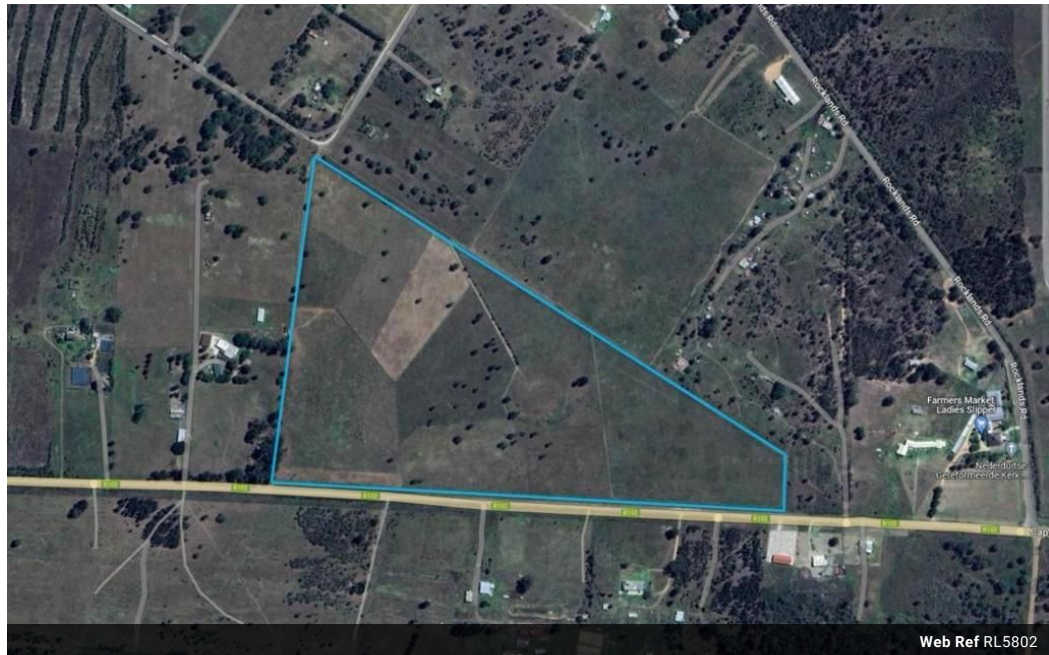


**Graham White**  
0764886464  
graham@tfre.co.za

Contact TFRE Gqeberha

041 3602455

236 Cape Road  
Mill Park  
Gqeberha



**R2,640,000**

**Monthly Bond Repayment** R26,802.04

Calculated over 20 years at 10.75% with no deposit.

**Transfer Costs** R129,087.00 **Bond Costs** R40,300.00

These calculations are only a guide. Please ask your conveyancer for exact calculations.

21 Hectares Flat Farmland fenced-in & Electrified. 2 Entrance gates (one of which is on Cape Road)

It is ideally situated with access to Cape Road.

21 Hectares of grazing pasture camps in Rendallton, St. Albans.

It is divided into 12 grazing camps for cattle.

It can also be used for sheep, pigs, chickens or goats.

The property is fully fenced-in, with electric fencing and has a dam.

2 Entrance gates (one of which is on Cape Road) give easy access to the farm from a main tarred road.

The topography of the land is flat.

Every effort has been made to ensure the content of this advert is correct, however, no responsibility will be borne for any errors or omissions it may contain.

## Features

