



Sharon Towns
076 826 3474
sharont@tfre.co.za

Contact TFRE Gqeberha

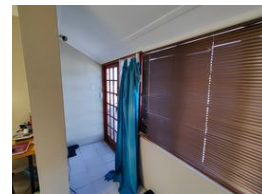
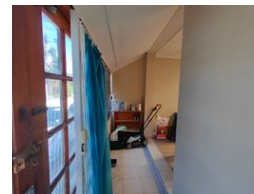
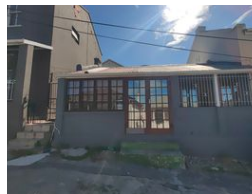
041 3602455

236 Cape Road
Mill Park
Gqeberha



SOLE MANDATE

Web Ref RL6744



R590,000

🏠 2 🚿 1

Monthly Bond Repayment R6,089.91

Calculated over 20 years at 11% with no deposit.

Transfer Costs R21,217.00 **Bond Costs** R15,795.00

These calculations are only a guide. Please ask your conveyancer for exact calculations.

Monthly Rates R542

2 Bedroom semi-detached house in Richmond Hill

This cosy 2-bedroom home is ideal for the first-time buyer or an investor.

It needs some TLC. With just a bit of paint and sandpaper, it will be as good as new.

As you enter this home, you enter an entrance hall that leads straight into your open-plan lounge and kitchen area. A few steps adjacent to the kitchen take you into your scullery, where you will find the double sink and more kitchen cupboards.

This room leads you into the bathroom, which has a toilet, basin and shower over the bath – all in one.

The two bedrooms have built-in cupboards. The main bedroom has an enclosed balcony with a sea view where you can enjoy your morning coffee or tea.

In the compact backyard, you can create your dreamy oasis.

Call now to view.

Every effort has been made to ensure the content of this advert is correct, however, no...

Features

| | | | |
|---------------------|-----|-----------------|-------|
| Pets Allowed | Yes | | |
| Interior | | Exterior | |
| Bedrooms | 2 | Security | No |
| Bathrooms | 1 | Pool | No |
| Kitchens | 1 | Views | False |
| Recep. Rooms | 1 | | |
| Furnished | No | | |

