

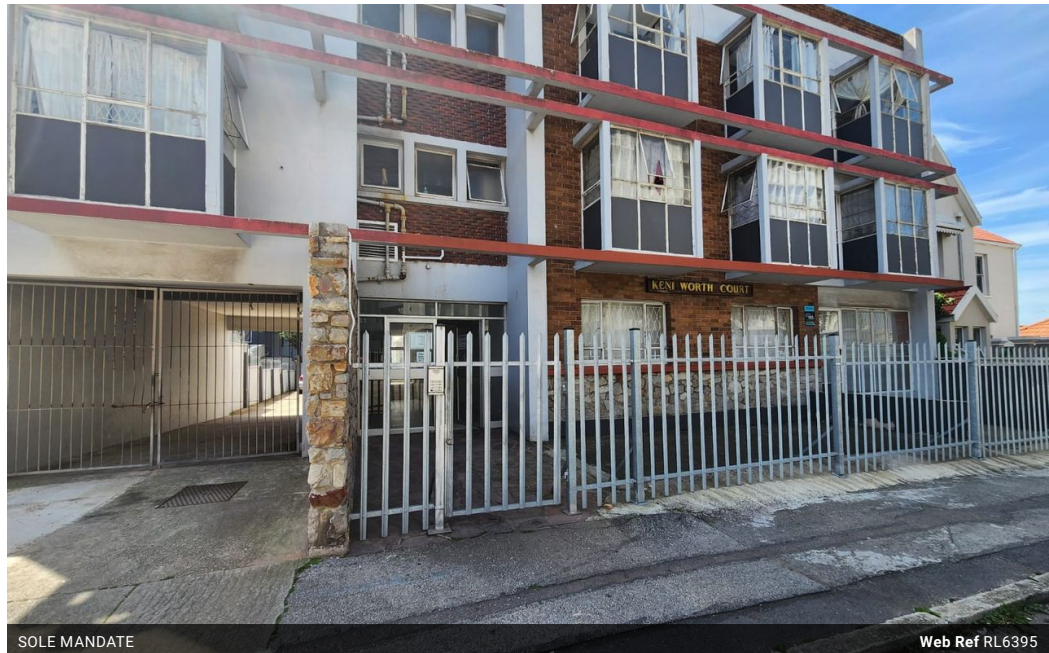


**Shane Williams**  
0843075148  
shane@tfre.co.za

Contact TFRE Gqeberha

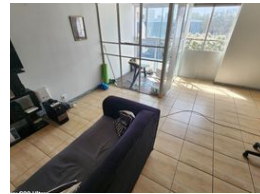
041 3602455

236 Cape Road  
Mill Park  
Gqeberha



SOLE MANDATE

Web Ref RL6395



**R370,000**

🛏 1 🚿 1

**Monthly Bond Repayment** R3,756.35

Calculated over 20 years at 10.75% with no deposit.

**Transfer Costs** R16,806.00 **Bond Costs** R11,960.00

These calculations are only a guide. Please ask your conveyancer for exact calculations.

**Monthly Rates** R300

Priced to Sell!

Exclusive sole mandate. This apartment offers an ideal opportunity for those seeking a low-maintenance living space. Perfectly designed for a lock-up-and-go lifestyle, this property features a cosy lounge area that provides a welcoming atmosphere.

The enclosed "stoep" extends your living space, allowing for building relaxation.

The well-appointed kitchen is functional and efficient.

The apartment includes one comfortable bedroom and a neatly designed bathroom.

This property is perfect for first-time buyers, professionals, or anyone looking for an investment opportunity.

Don't miss the chance to make this charming apartment your own!

Every effort has been made to ensure the content of this advert is correct, however, no responsibility will be borne for any errors or omissions it may contain.

## Features

### Interior

Bedrooms	1
Bathrooms	1
Kitchens	1
Recep. Rooms	1
Furnished	No

### Exterior

Carports / Parkings	1
Security	No
Pool	No
Views	False

### Sizes

Floor Size	58m <sup>2</sup>
------------	------------------

