



Tessa van der Westhuizen
0834157346
tessa@tfre.co.za

Contact TFRE Gqeberha

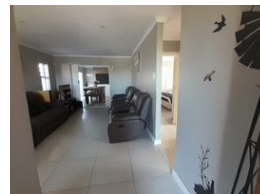
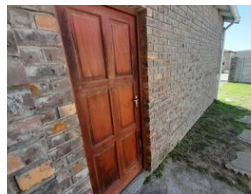
041 3602455

236 Cape Road
Mill Park
Gqeberha



SOLE MANDATE

Web Ref RL6605



R1,295,000

3 2 1

Monthly Bond Repayment R13,147.21

Calculated over 20 years at 10.75% with no deposit.

Transfer Costs R37,467.00 **Bond Costs** R27,105.00

These calculations are only a guide. Please ask your conveyancer for exact calculations.

Monthly Rates R1,500

Charming Family Home in Parsons Ridge

Step into comfort and style with this delightful 3-bedroom home in the heart of Parsons Ridge.

Each bedroom has built-in cupboards, while the main bedroom offers the added luxury of an en suite bathroom featuring a shower, basin and toilet. A separate full guest bathroom includes a bath, shower, basin and toilet, catering perfectly to family and guests alike.

The house has an open plan design that creates a welcoming atmosphere, seamlessly connecting the spacious living room/TV Room. The Dining room has a built-in braai, for that

Special occasions with friends and family to unwind.

The fully enclosed property boasts a generous, pet-friendly yard, providing ample space for outdoor activities.

The garage is thoughtfully designed with plumbing for a washing machine and plenty of secure parking, including room for 2...

Features

Pets Allowed Yes

Interior

Bedrooms	3
Bathrooms	2
Kitchens	1
Recep. Rooms	2
Furnished	No

Exterior

Garages	1
Carports / Parkings	2
Security	No
Pool	No
Views	False