



John Grobler
0731555551
john@tfre.co.za

Contact TFRE Gqeberha

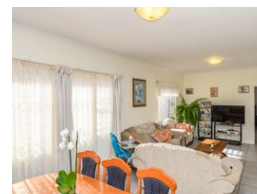
041 3602455

236 Cape Road
Mill Park
Gqeberha



SOLE MANDATE

Web Ref RL6064



R1,195,000

Monthly Bond Repayment R12,131.99

Calculated over 20 years at 10.75% with no deposit.

Transfer Costs R32,749.00 **Bond Costs** R25,220.00

These calculations are only a guide. Please ask your conveyancer for exact calculations.

🛏 3 🚿 2 🏠 1

Low maintenance face brick home - Reduced for quick sale!

This lovely home boasts 3 bedrooms all with built-in cupboards, 2 bathrooms the main bedroom with an en-suite bathroom, a large open-plan living area with a beautifully fitted kitchen with plenty of cupboards, and a single garage entrance into the house.

The roof is tiled and so are all the floors.

The property is fully walled with electric fencing, security on all windows and sliding doors, an alarm system, the entrance gate and garage door on remote, and plenty of paving and lawn.

Every effort has been made to ensure the content of this advert is correct, however, no responsibility will be borne for any errors or omissions it may contain.

Phone me now to view this neat property.

Features

Pets Allowed		Yes			
Interior				Sizes	
Bedrooms	3	Garages	1	Floor Size	130m²
Bathrooms	2	Security	Yes		
Kitchens	1	Pool	No		
Recep. Rooms	2	Views	False		
Furnished	No				

