



Shane Williams
0843075148
shane@tfre.co.za



Sharron Nortier
0827830506
sharron@tfre.co.za

Contact TFRE Gqeberha

041 3602455

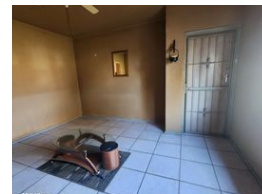
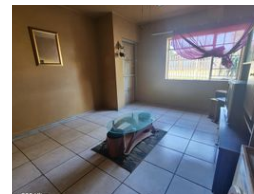
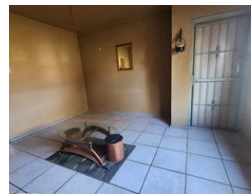
236 Cape Road
Mill Park
Gqeberha

UNDER OFFER



SOLE MANDATE

Web Ref RL6849



R450,000

3 1

Monthly Bond Repayment R4,568.53

Calculated over 20 years at 10.75% with no deposit.

Transfer Costs R17,928.00 **Bond Costs** R12,935.00

These calculations are only a guide. Please ask your conveyancer for exact calculations.

Monthly Rates R400

EXCLUSIVE SOLE MANDATE -Neat 3-Bedroom Apartment in Port Elizabeth

Welcome to this well-maintained and inviting apartment located in a quiet and convenient area of Port Elizabeth. Ideal for families and investors, this home offers comfortable living with all the essentials in place.

Step inside to find three spacious bedrooms, each featuring built-in wardrobes for easy storage.

The living room is a warm, welcoming space perfect for relaxing.

The kitchen is functional and neat, complete with built-in cupboards, an oven and hob, offering everything you need for easy meal preparation.

The apartment includes a bathroom with all the necessary fittings.

Flooring throughout is a combination of tiled and carpeted areas, creating a mix of practicality and comfort.

Outside, enjoy a neat garden area—ideal for outdoor relaxation or gardening enthusiasts. Parking is available, adding further...

Features

Interior

Bedrooms	3
Bathrooms	1
Kitchens	1
Recep. Rooms	1
Furnished	No

Exterior

Carports / Parkings	1
Security	Yes
Pool	No
Views	False

Sizes

Land Size	10,739m²
-----------	----------

