



**Bryan Jonker**  
0763112781  
bryan@tfre.co.za

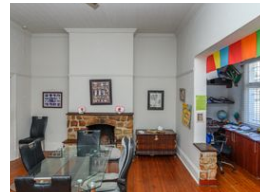
Contact TFRE Gqeberha

041 3602455

236 Cape Road  
Mill Park  
Gqeberha



Web Ref RL6074



**R1,345,000**

🛏 4 🚿 2 🚗 2

**Monthly Bond Repayment** R13,654.83

Calculated over 20 years at 10.75% with no deposit.

**Transfer Costs** R38,967.00 **Bond Costs** R27,105.00

These calculations are only a guide. Please ask your conveyancer for exact calculations.

**Monthly Rates** R1,500

### Mount Croix Golden Oldie!!

This gracious corner property in Mount Croix is bursting with charm from a bygone era with its wrap-around enclosed stoep to its high ceilings, wide hallway, wooden floors and working fireplace.

The property consists of :

4 bedrooms

2 bathrooms, one with a bath and the other a shower

Large open plan lounge, dining room with study area off to the side

The kitchen has built-in cupboards, a separate scullery and spence.

Laundry area

Large tandem garage with space for two vehicles and extra workspace.

The garden is enclosed and has a storage room as well as a JoJo tank with a pump.

The property is within walking distance of schools, hospitals, shops and all major routes.

Contact me Bryan Jonker for your viewing today

### Features

**Pets Allowed** Yes

#### Interior

Bedrooms	4
Bathrooms	2
Kitchens	1
Recep. Rooms	2
Studies	1
Furnished	No

#### Exterior

Garages	2
Security	No
Pool	No
Views	False

#### Sizes

Land Size	565m <sup>2</sup>
-----------	-------------------

