



Kwame Nicol
0780531462
kwame@tfre.co.za

Contact TFRE Gqeberha

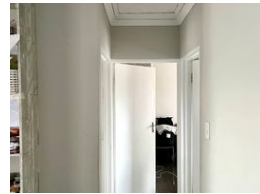
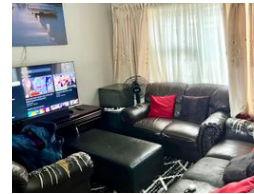
041 3602455

236 Cape Road
Mill Park
Gqeberha

UNDER OFFER



Web Ref RL6785



R560,000

🛏 2 🚿 2

Monthly Bond Repayment R5,685.28

Calculated over 20 years at 10.75% with no deposit.

Transfer Costs R21,217.00 **Bond Costs** R15,795.00

These calculations are only a guide. Please ask your conveyancer for exact calculations.

2 Bedroom starter home!!

Situated on a large-sized erf, this two-bedroom home with bath/toilet, spacious open-plan lounge, with modern kitchen is a perfect starter home..

It is very well maintained and neat.

The big backyard is perfect for extensions and building flats.

The property is fully walled and secure.

Easy to park three cars.

Close to all amenities.

Every effort has been made to ensure the content of this advert is correct, however, no responsibility will be borne for any errors or omissions it may contain

Features

Pets Allowed Yes

Interior

Bedrooms	2
Bathrooms	2
Kitchens	1
Recep. Rooms	1
Furnished	No

Exterior

Carports / Parkings	3
Security	Yes
Pool	No
Views	False