



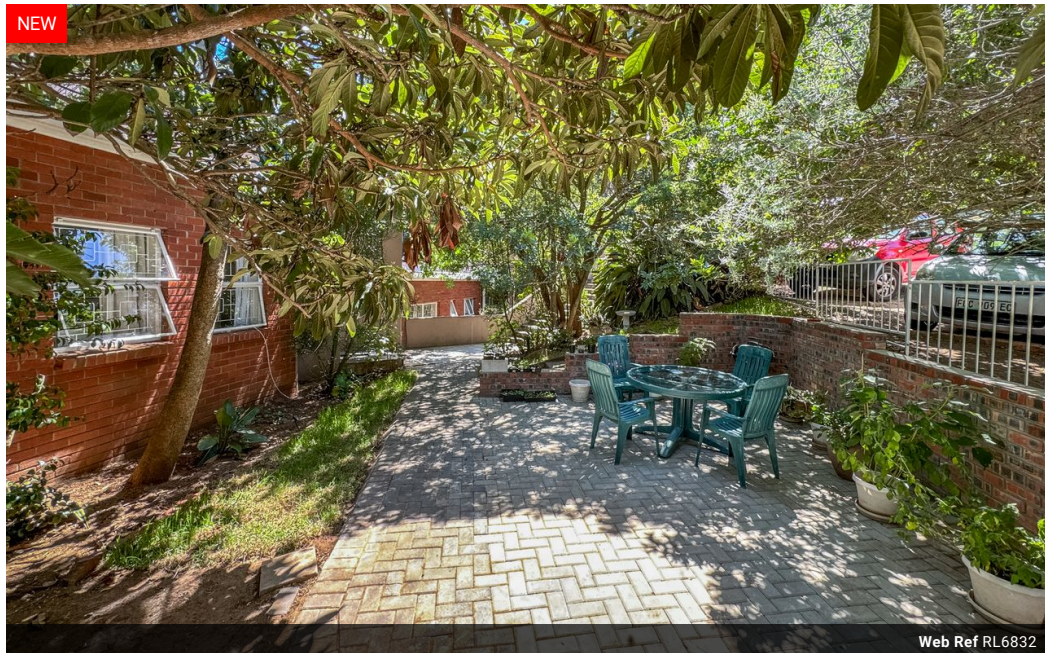
Sharon Towns
076 826 3474
sharont@tfre.co.za

Contact TFRE Gqeberha

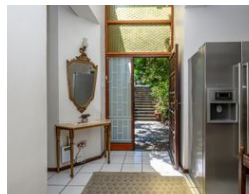
041 3602455

236 Cape Road
Mill Park
Gqeberha

NEW



Web Ref RL6832



R2,900,000

3 2

Monthly Bond Repayment R29,441.64

Calculated over 20 years at 10.75% with no deposit.

Transfer Costs R152,055.00 **Bond Costs** R42,185.00

These calculations are only a guide. Please ask your conveyancer for exact calculations.

Monthly Rates R2,718

Spacious 3 Bedroom Family home with a 1 and 2 Bedroom Flat!!!

Spacious 3 Bedroom Family home with a 1 and 2 Bedroom Flat!!!

This magnificent large family home is situated in a quiet cul de sac, nestled within the lush green garden in the sought-after area of Linkside. This could enchant you into believing that you are miles away from all the hustle and bustle of city living.

Upon entering, a large entrance hall greets you which flow into living areas, the lounge with a fireplace. Sliding doors from the lounge and all three bedrooms take you onto a balcony that overlooks the valley.

The open plan kitchen has plenty of built in cupboards, under counter oven and hob plus a gas hob for those load shedding days.

As you enter the passageway the study is to your right.

The family bathroom consists of a bath and basin. You have a separate guest toilet with a basin.

The 3 large bedrooms all...

Features

Pets Allowed	Yes		
Interior		Exterior	Sizes
Bedrooms	3	Carports / Parkings	6
Bathrooms	2	Security	No
Kitchens	1	Pool	No
Recep. Rooms	2	Views	False
Studies	1		
Furnished	No		
			Land Size
			1,473m²

