

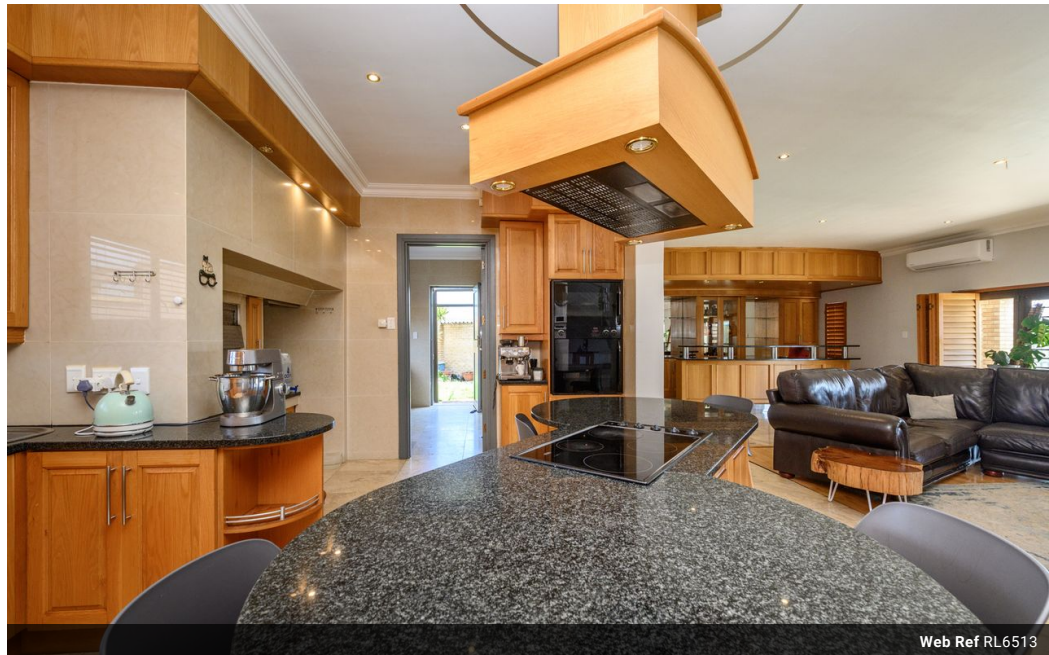


**Kwame Nicol**  
0780531462  
kwame@tfre.co.za

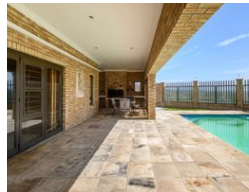
Contact TFRE Gqeberha

041 3602455

236 Cape Road  
Mill Park  
Gqeberha



Web Ref RL6513



**R3,620,000**

**Monthly Bond Repayment** R36,751.29

Calculated over 20 years at 10.75% with no deposit.

**Transfer Costs** R237,082.00 **Bond Costs** R49,725.00

These calculations are only a guide. Please ask your conveyancer for exact calculations.

🛏 5 🚿 3 🚗 2

### Magnific Home!

Architecturally designed, Five bedroom, double-story, face brick beauty, facing the sea.

Huge open-plan lounge with a modern designed kitchen, dining room. Sliding doors, leading to a large sparkling pool with undercover braai area.

All bedroom upstairs with sea views.

Double garage with remote.

Very secured, cameras with beams.

Close to all amenities. Walk to the beach.

Every effort has been made to ensure the content of this advert is correct, however, no responsibility will be borne for any errors or omissions it may contain.

### Features

**Pets Allowed** Yes

**Interior**  
Bedrooms 5  
Bathrooms 3  
Kitchens 1  
Recep. Rooms 2  
Studies 1  
Furnished No

**Exterior**  
Garages 2  
Carports / Parkings 4  
Security Yes  
Pool Yes  
Views True

**Sizes**  
Land Size 1,384m<sup>2</sup>

