

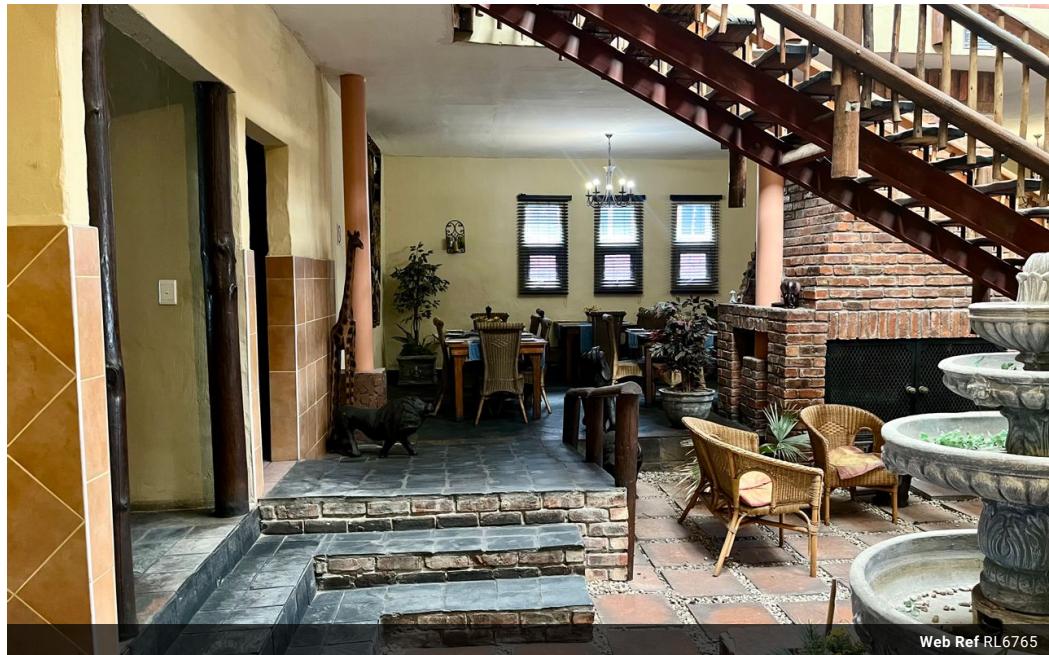


Kwame Nicol
0780531462
kwame@tfre.co.za

Contact TFRE Gqeberha

041 3602455

236 Cape Road
Mill Park
Gqeberha



Web Ref RL6765



R3,400,000

🛏 12 🚿 12 🚗 2

Monthly Bond Repayment R34,517.78

Calculated over 20 years at 10.75% with no deposit.

Transfer Costs R208,547.00 **Bond Costs** R45,955.00

These calculations are only a guide. Please ask your conveyancer for exact calculations.

CALLING ALL INVESTORS

12 Rooms, beachside, double story. Potential for a Guest house .

Previously used as a guest house. A bit of TLC and its a stunning property with sea views. Stunning views of the sea.

Four bedrooms downstairs and 8 upstairs with sea views.

Staff quarters and an office.

All rooms with own bathroom.

Huge dining area and bar.

Double garage and space for parking.

Close to all amenities.

Walk to the beach.

Very secure

Features

Interior

Bedrooms	12
Bathrooms	12
Kitchens	1
Recep. Rooms	3
Studies	1
Furnished	No

Exterior

Garages	2
Carports / Parkings	5
Security	No
Dom. Accom.	1
Pool	Yes
Views	True