



Theo Hill
0842743536
theo@tfre.co.za

Contact TFRE Gqeberha

041 3602455

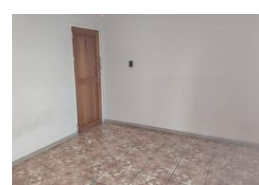
236 Cape Road
Mill Park
Gqeberha

SOLD



SOLE MANDATE

Web Ref RL6844



R350,000

Monthly Bond Repayment R3,553.30

Calculated over 20 years at 10.75% with no deposit.

Transfer Costs R16,346.00 **Bond Costs** R11,560.00

These calculations are only a guide. Please ask your conveyancer for exact calculations.

🛏 3 🚿 1 🚗 1

EXCLUSIVE SOLE MANDATE

Spacious 3-Bedroom Flat with Enclosed Balcony

Welcome to this well-maintained 3-bedroom flat, perfectly located in a complex in Port Elizabeth. Offering a blend of space, comfort, and functionality, this flat is ideal for young professionals or investors.

This unit features:

3 Spacious bedrooms with built-in cupboards and ample natural light

Separate bathroom and toilet for added convenience

Large lounge area – perfect for family time

Enclosed balcony – ideal for relaxing with your morning coffee or as a bright, airy sunroom

Kitchen with plenty of cupboard space

Secure complex with access control and well-maintained communal areas

Features

Interior

Bedrooms	3
Bathrooms	1
Kitchens	1
Recep. Rooms	1
Furnished	No

Exterior

Garages	1
Carports / Parkings	1
Security	No
Pool	No
Views	False

