



Nqabisa Gwelana
0732612589
nqabisa@tfre.co.za

Contact TFRE Gqeberha

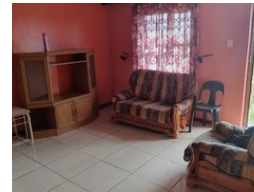
041 3602455

236 Cape Road
Mill Park
Gqeberha



SOLE MANDATE

Web Ref RL6597



R649,000

Monthly Bond Repayment R6,588.84

Calculated over 20 years at 10.75% with no deposit.

Transfer Costs R23,730.00 **Bond Costs** R17,680.00

These calculations are only a guide. Please ask your conveyancer for exact calculations.

2 1

BEAUTIFUL HOME FOR SALE !!!

This two-bedroom fully tiled home is located in Balassi Valley, near Bisho.

It boasts two bedrooms, a fully equipped kitchen with built-in cupboards, a lounge and a bathroom.

Whether you are starting out in life or looking to settle down, this home suitable for both young and old.

At the back of the property is a two-bedroom flatlet with a lounge and a bathroom that can be used to generate rental income or extra space for those extended family visits.

Every effort has been made to ensure the content of this advert is correct, however, no responsibility will be borne for any errors or omissions it may contain.

Features

Pets Allowed	Yes			
Interior		Exterior		Sizes
Bedrooms	2	Carports / Parkings	2	Land Size
Bathrooms	1	Security	No	481m²
Kitchens	1	Pool	No	
Recep. Rooms	1	Views	False	
Furnished	No			

