



Riana Roux
0717441702
riana@tfre.co.za

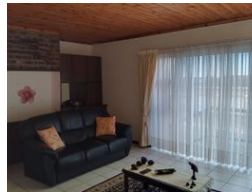
Contact TFRE Gqeberha

041 3602455

236 Cape Road
Mill Park
Gqeberha



Web Ref RL6810



R2,485,000

🛏 4 🚿 2.5 🚗 2

Monthly Bond Repayment R25,228.44

Calculated over 20 years at 10.75% with no deposit.

Transfer Costs R114,520.00 **Bond Costs** R38,415.00

These calculations are only a guide. Please ask your conveyancer for exact calculations.

Monthly Rates R1,200

Inviting 4-bedroom home with Distant Ocean Views – Jeffreys Bay

Joint Mandate

Inviting 4-bedroom home with Distant Ocean Views – Jeffreys Bay

Perfectly positioned in central Jeffreys Bay, this low-maintenance, family-oriented home combines comfort, practicality, and security—all just minutes from the ocean.

From the moment you step inside, you're greeted by a welcoming and functional space designed for everyday living and relaxed entertaining.

Property Highlights:

4 Generously Sized Bedrooms – Ideal for a growing family, each room offers ample space and natural light.

2 Full Bathrooms + Guest Toilet – Thoughtfully laid out for convenience and easy family living.

Multi-Use Room – Perfect as a study, craft room, or home office—adaptable to your needs.

Open-Plan Living Area – Includes a modern kitchen with separate scullery, a cosy dining space opening to an enclosed stoep via sliding doors.

Features

Pets Allowed Yes

Interior

Bedrooms	4
Bathrooms	2.5
Kitchens	1
Recep. Rooms	2
Studies	1
Furnished	No

Exterior

Garages	2
Security	Yes
Pool	No
Views	True

Sizes

Floor Size	260m ²
Land Size	578m ²

