



Tonie Botes
0727386447
tonie@tfre.co.za



Ben Botma
+27615416724
ben@tfre.co.za

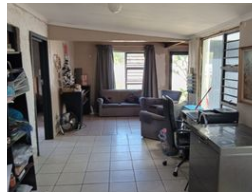
Contact TFRE Gqeberha

041 3602455

236 Cape Road
Mill Park
Gqeberha



Web Ref RL6666



R1,165,000

🛏 2 🚿 1 🏠 1

Monthly Bond Repayment R11,827.42

Calculated over 20 years at 10.75% with no deposit.

Transfer Costs R32,749.00 **Bond Costs** R25,220.00

These calculations are only a guide. Please ask your conveyancer for exact calculations.

Monthly Rates R990

Cottage Style House With Lots Of Potential

Nestled in the peaceful suburb of Paradise Beach, just outside of Jeffreys Bay, this property offers incredible potential for the right buyer.

Perfectly suited for creating their dream home, this cosy house features 2 bedrooms, 1 bathroom, and an open-plan living area that seamlessly integrates the kitchen, dining, and lounge spaces.

A single garage provides convenience, while the property is fully enclosed, offering a safe environment for pets and children to play freely.

Paradise Beach is known for its rich wildlife, and the stunning beach and lagoon are only a short drive away, making it a nature lover's paradise.

For more information or to arrange a viewing, please don't hesitate to contact me.

Every effort has been made to ensure the content of this advert is correct, however, no responsibility will be borne for any...

Features

Pets Allowed Yes

Interior

Bedrooms	2
Bathrooms	1
Kitchens	1
Recep. Rooms	2
Furnished	No

Exterior

Garages	1
Security	No
Pool	No
Views	False

Sizes

Floor Size	123m²
Land Size	749m²

