



Tonie Botes
0727386447
tonie@tfre.co.za



Ben Botma
+27615416724
ben@tfre.co.za

Contact TFRE Gqeberha

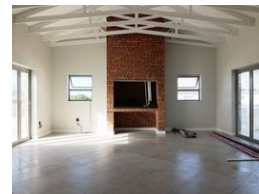
041 3602455

236 Cape Road
Mill Park
Gqeberha

NEW



Web Ref RL6866



R3,395,000

3 2 2

Monthly Bond Repayment R34,467.02

Calculated over 20 years at 10.75% with no deposit.

Transfer Costs R207,997.00 **Bond Costs** R45,955.00

These calculations are only a guide. Please ask your conveyancer for exact calculations.

Monthly Rates R1,000

Contemporary Living with Scenic Views in Wavecrest

Nestled directly opposite the serene kloof in the heart of Wavecrest, this newly completed home presents a unique opportunity to embrace modern comfort with breathtaking views of untouched natural surroundings.

This almost fully completed home has much to offer.

Thoughtfully designed for effortless living, the home covers 230sqm and features three generously sized bedrooms, two stylish bathrooms, and sleek, high-quality finishes throughout. The open-concept layout enhances the sense of space and light, creating a warm and welcoming atmosphere—ideal for both entertaining guests and everyday family life.

A spacious double garage ensures secure parking, while the expansive 692sqm stand provides plenty of outdoor space for children to play, pets to roam, or future additions.

Wake up to the soothing sounds of birdlife and enjoy...

Features

Pets Allowed Yes

Interior

Bedrooms	3
Bathrooms	2
Kitchens	1
Recep. Rooms	2
Furnished	No

Exterior

Garages	2
Security	No
Pool	No
Views	True

Sizes

Floor Size	230m ²
Land Size	692m ²

Extras

Built In Braai Centre Island Dishwasher Connection Electric Garage En Suite Freestanding Fibre Garden Granite Tops Open Plan Kitchen Patio Totally Walled Washing Machine Connection Coastal Beach Scullery