

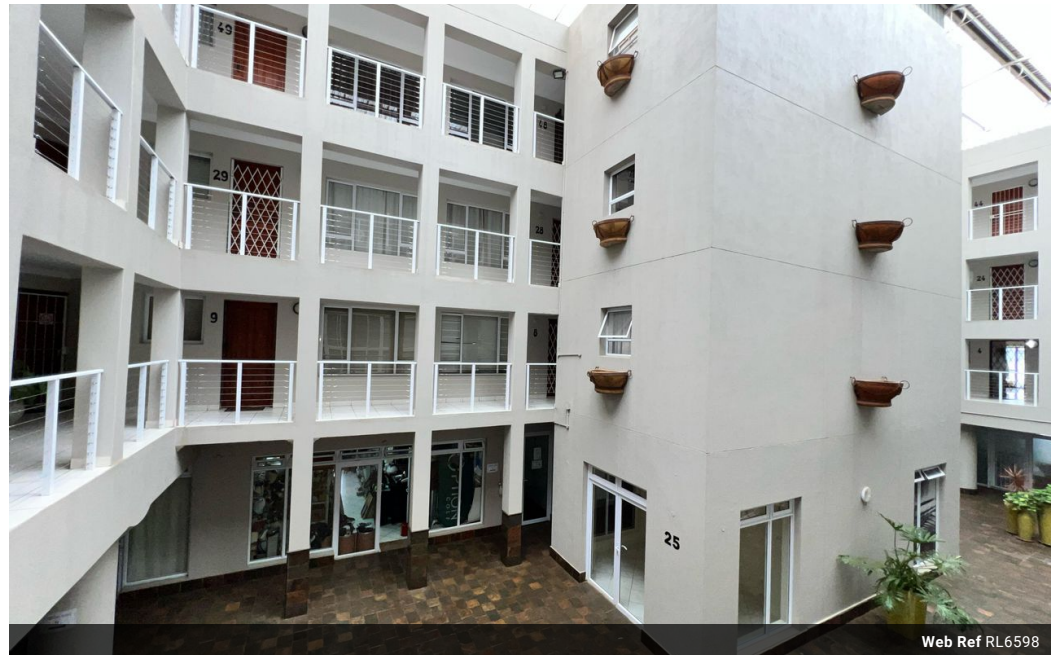


Riana Roux
0717441702
riana@tfre.co.za

Contact TFRE Gqeberha

041 3602455

236 Cape Road
Mill Park
Gqeberha



Web Ref RL6598



R1,075,000

2 1

Monthly Bond Repayment R10,913.71

Calculated over 20 years at 10.75% with no deposit.

Transfer Costs R32,749.00

Bond Costs R25,220.00

These calculations are only a guide. Please ask your conveyancer for exact calculations.

Monthly Levy R1,650

Monthly Rates R802

Beautiful 2-Bedroom Apartment in Central Jeffreys Bay

Beautiful 2-Bedroom Apartment in Central Jeffreys Bay

Prime location within walking distance to the beach, restaurants, and all amenities. This centrally located apartment is an excellent investment opportunity or ideal for a holiday home.

Property Features:

Two well-sized bedrooms
Separate toilet and one bathroom
Open-plan kitchen and lounge
Closed balcony converted into an additional bedroom and workspace
Stairs and escalator access
Secure undercover basement parking
This property is perfect for first-time buyers, investors, or those looking for a convenient lock-up-and-go lifestyle near the ocean.

Contact us today to arrange a viewing.

Every effort has been made to ensure the content of this advert is correct; however, no responsibility will be borne for any errors or

Features

Interior

Bedrooms	2
Bathrooms	1
Kitchens	1
Recep. Rooms	1
Furnished	No

Exterior

Carports / Parkings	1
Security	No
Pool	No
Views	False

Sizes

Floor Size	87m ²
------------	------------------

