



Tonie Botes
0727386447
tonie@tfre.co.za

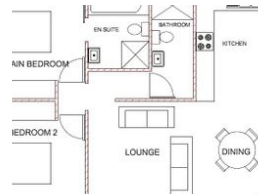
Contact TFRE Gqeberha

041 3602455

236 Cape Road
Mill Park
Gqeberha



Web Ref RL6798



R1,320,000

2 2

Monthly Bond Repayment R13,401.02

Calculated over 20 years at 10.75% with no deposit.

Transfer Costs R38,217.00 **Bond Costs** R27,105.00

These calculations are only a guide. Please ask your conveyancer for exact calculations.

Monthly Rates R890

Plot & Plan Package. Get Your Foot In The Property Market With This Starter Home!

DUAL MANDATE! Plot & Plan – All-Inclusive Building Package

This Plot & Plan option offers exceptional value, with all building costs and the plot included in the price. It's an ideal opportunity for first-time homebuyers to enter the property market and own a brand-new home.

Whether you're looking to downscale for retirement or invest in a rental property, this home offers flexibility and value.

The home will feature:

- 2 Bedrooms
- 2 Bathrooms (including a main en-suite)
- Open-plan kitchen and living area
- Single carport with paving

Please Note:

- Boundary walls that do not currently exist are not included in the price.
- Each home is custom-built to your specifications. The advertised plan can be altered to suit your needs (with cost adjustments as applicable).

Features

Pets Allowed		Yes			
Interior				Sizes	
Bedrooms	2			Floor Size	96m ²
Bathrooms	2			Land Size	358m ²
Kitchens	1				
Recep. Rooms	2				
Furnished	No				
Exterior					
Carports / Parkings	1				
Security	No				
Pool	No				
Views	False				

Extras

Build in Wardrobes Coastal Beach En Suite Fibre Freestanding Granite Tops Open Plan Kitchen Under Counter Oven Gas Hob

