



**Gerhardt Joubert**  
0718322548  
gerhardt@tfre.co.za

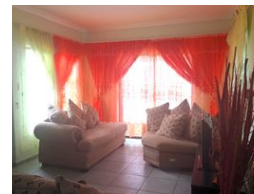
Contact TFRE Gqeberha

041 3602455

236 Cape Road  
Mill Park  
Gqeberha



Web Ref RL6458



**R1,650,000**

🛏 3 🚿 2 🚗 2

**Monthly Bond Repayment** R16,751.28

Calculated over 20 years at 10.75% with no deposit.

**Transfer Costs** R52,453.00 **Bond Costs** R30,875.00

These calculations are only a guide. Please ask your conveyancer for exact calculations.

**Monthly Rates** R990

### Neat 3-Bedroom House in a Quiet Street

Fountains Estate, Jeffreys Bay

This beautifully maintained home is tucked away in a peaceful street in the sought-after Fountains Estate. Ideal for families or individuals seeking a comfortable and conveniently located property, this home offers a balance of style, space, and practicality.

#### Key Features:

**Open-Plan Layout:** The kitchen, lounge, and dining areas are seamlessly integrated, perfect for modern living.

**3 Spacious Bedrooms:** Includes a generously sized master bedroom, offering plenty of room to relax.

**2 Bathrooms:** Practical and well-maintained to meet all your needs.

**Double Garage:** Secure parking for two vehicles with extra space for storage.

#### Outdoor Living:

The living area leads to a covered patio, ideal for entertaining.

A convenient outdoor braai area is accessible directly from the kitchen.

#### Outdoor Space:

Large

### Features

**Pets Allowed** Yes

#### Interior

Bedrooms	3
Bathrooms	2
Kitchens	1
Recep. Rooms	1
Furnished	No

#### Exterior

Garages	2
Security	No
Pool	No
Views	False

#### Sizes

Floor Size	154m <sup>2</sup>
Land Size	600m <sup>2</sup>

