

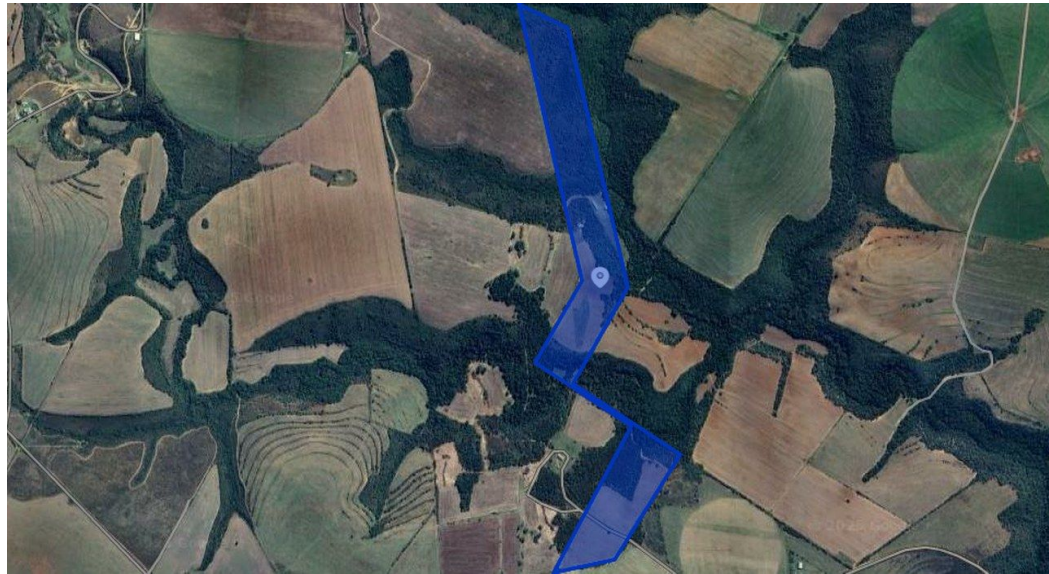


Tonie Botes
0727386447
tonie@tfre.co.za

Contact TFRE Gqeberha

041 3602455

236 Cape Road
Mill Park
Gqeberha



Web Ref RL6656



R3,195,000

0 4

Monthly Bond Repayment R32,436.57

Calculated over 20 years at 10.75% with no deposit.

Transfer Costs R183,829.00 **Bond Costs** R44,070.00

These calculations are only a guide. Please ask your conveyancer for exact calculations.

Monthly Rates R200

31ha Lifestyle Farm For Sale Near Humansdorp

This tranquil farmland is located approximately 12 kilometres from Humansdorp, just off the R102, offering a variety of features and opportunities for diverse uses. The property includes:

- Five wooden chalets of varying sizes, each equipped with solar energy to power lighting and charge phones and laptops, ensuring sustainability. One chalet is also fitted with a gas stove, gas fridge, and freezer for convenience.
- There are two smaller wooden huts, ideal for use as storage space or for other purposes.
- A large 330 square meter store (as mentioned per floor size) provides ample space for storage or potential farming activities.
- The farm includes five livestock camps.
- There are areas of natural, indigenous trees and plants, that enhance the environment and promote biodiversity.
- A steel structure is in the...

Features

Pets Allowed Yes

Interior

Bathrooms	4
Kitchens	1
Recep. Rooms	1
Furnished	No

Exterior

Carports / Parkings	10
Security	No
Pool	No
Views	True

Sizes

Floor Size	330m ²
Land Size	31Ha