



Riana Roux
0717441702
riana@tfre.co.za

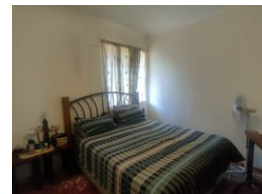
Contact TFRE Gqeberha

041 3602455

236 Cape Road
Mill Park
Gqeberha



Web Ref RL6634



R1,395,000

🛏 3 🚿 2 🏠 1

Monthly Bond Repayment R14,162.44

Calculated over 20 years at 10.75% with no deposit.

Transfer Costs R40,467.00 **Bond Costs** R27,105.00

These calculations are only a guide. Please ask your conveyancer for exact calculations.

Monthly Rates R950

Spacious Family Home with Investment Potential in Boskloof, Humansdorp

Located in the peaceful and secure Boskloof neighbourhood, this spacious family home presents a fantastic fixer-upper opportunity.

Whether you're looking to create your dream home or invest in a property with rental potential, this home has endless possibilities.

Main House Features:

Three well-sized bedrooms with built-in cupboards
Two bathrooms, including an en-suite in the main bedroom
Large kitchen, dining room, and lounge, plus a separate family room
Extra-long and wide double garage with ample storage
Pre-paid electricity for convenience

Bonus: Two Additional Flats!

Flat 1: One bedroom, one bathroom

Flat 2: Two bedrooms, one bathroom

Features

Pets Allowed		Yes			
Interior				Exterior	
Bedrooms	3			Garages	1
Bathrooms	2			Security	No
Kitchens	1			Pool	No
Recep. Rooms	2			Views	False
Furnished	No				
				Sizes	
				Land Size	1,014m ²

