

**SOLD**



Vikki Hohana  
0614449208  
vikki@tfre.co.za

Contact TFRE Gqeberha

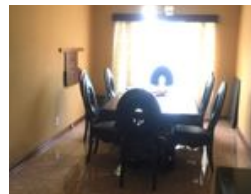
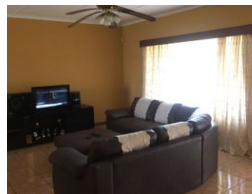
041 3602455

236 Cape Road  
Mill Park  
Gqeberha



SOLE MANDATE

Web Ref RL6536



**R1,195,000**

🛏️ 3 🚿 1.5 🏠 1

**Monthly Bond Repayment** R12,131.99

Calculated over 20 years at 10.75% with no deposit.

**Transfer Costs** R32,749.00 **Bond Costs** R25,220.00

These calculations are only a guide. Please ask your conveyancer for exact calculations.

Situated in the desirable suburb of Saxilby!!

With its warm, welcoming atmosphere and excellent position in the quiet suburb of Saxilby, this is the perfect family home.

Walking through the front door you will find the spacious living and dining area with the kitchen being separate.

The home has a total of 3 bedrooms, all with built-in cupboards,

Behind the garage is an additional room with a separate toilet.

The backyard has a large garden with a pool and braai area.

There is ample space all around is overall very well maintained.

Situated close to schools and every conceivable amenity.

Viewing by appointment only.

Every effort has been made to ensure the content of this advert is correct, however, no responsibility will be borne for any errors or omissions it may contain

## Features

**Pets Allowed** Yes

### Interior

Bedrooms	3
Bathrooms	1.5
Kitchens	1
Recep. Rooms	2
Furnished	No

### Exterior

Garages	1
Carports / Parkings	1
Security	No
Dom. Accom.	1
Pool	Yes
Views	False

### Sizes

Floor Size	1,107m²
Land Size	1,104m²