



**Sharron Nortier**  
0827830506  
sharron@tfre.co.za



**Shane Williams**  
0843075148  
shane@tfre.co.za

Contact TFRE Gqeberha

041 3602455

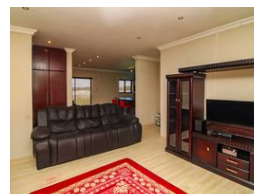
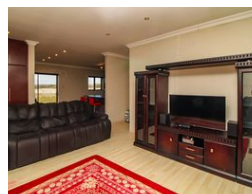
236 Cape Road  
Mill Park  
Gqeberha

**SOLD**



SOLE MANDATE

Web Ref RL6850



**R950,000**

**Monthly Bond Repayment** R9,644.68

Calculated over 20 years at 10.75% with no deposit.

**Transfer Costs** R30,412.00    **Bond Costs** R23,335.00

These calculations are only a guide. Please ask your conveyancer for exact calculations.

**Monthly Rates** R970

🏠 2    🚿 2    🚗 2

### EXCLUSIVE SOLE MANDATE

Modern 2-Bedroom Home with Double Garage – Move-In Ready!

This beautifully maintained home offers comfortable and modern living with 2 spacious bedrooms, both with built-in cupboards. The main bedroom includes a stylish en-suite bathroom, while the second, full guest bathroom is equally modern and in excellent condition, complete with a bath, toilet, and basin.

Enjoy open-plan living in a bright and airy lounge that flows seamlessly into a modern, well-fitted kitchen, with a built-in oven and hob, perfect for everyday comfort.

The property also features a double garage with paved parking in front, providing added convenience and secure parking for multiple vehicles.

This home is neat, modern, and ready for you to move in.

Every effort has been made to ensure the accuracy of the content of this advertisement; however, no...

### Features

#### Interior

Bedrooms	2
Bathrooms	2
Kitchens	1
Recep. Rooms	1
Furnished	No

#### Exterior

Garages	2
Carports / Parkings	2
Security	No
Pool	No
Views	False

#### Sizes

Land Size	990m <sup>2</sup>
-----------	-------------------

