



Sharron Nortier
0827830506
sharron@tfre.co.za

Contact TFRE Gqeberha

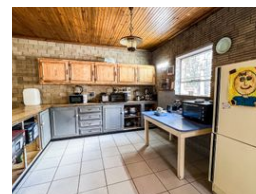
041 3602455

236 Cape Road
Mill Park
Gqeberha

UNDER OFFER



Web Ref RL6456



R950,000

Monthly Bond Repayment R9,644.68

Calculated over 20 years at 10.75% with no deposit.

Transfer Costs R30,412.00 **Bond Costs** R23,335.00

These calculations are only a guide. Please ask your conveyancer for exact calculations.

🛏 4 🚿 3 🚗 2

A Renovation Opportunity with Great Potential!

Dual Mandate. This spacious property offers a fantastic opportunity for buyers looking to invest in a project that can be transformed into a beautiful family home. While the property requires some tender love and care, its generous size and prime location make it a perfect canvas for renovation.

This home offers:

- 4 Bedrooms: Four sizable bedrooms, some with built-in cupboards, offer plenty of room for customization and improvement.
- 3 Bathrooms: Conveniently catering for the whole family's needs.
- Living Areas: A large lounge and dining room are ideal for creating an open and inviting space for family living and entertaining.
- Farm-style Kitchen: A charming farm-style kitchen with built-in cupboards.
- Entertainment area: Includes a braai area and a small splash pool, perfect for entertaining and relaxation.

A spacious...

Features

Pets Allowed	Yes				
Interior		Exterior		Sizes	
Bedrooms	4	Garages	2	Land Size	1,025m²
Bathrooms	3	Security	No		
Kitchens	1	Pool	Yes		
Recep. Rooms	2	Views	False		
Studies	1				
Furnished	No				