



Sharron Nortier
0827830506
sharron@tfre.co.za

Contact TFRE Gqeberha

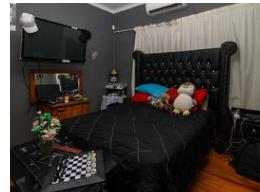
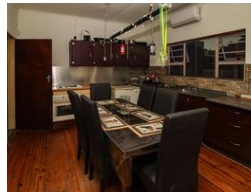
041 3602455

236 Cape Road
Mill Park
Gqeberha

NEW



Web Ref RL6766



R1,390,000

3 3 1

Monthly Bond Repayment R14,347.42

Calculated over 20 years at 11% with no deposit.

Transfer Costs R40,317.00 **Bond Costs** R27,105.00

These calculations are only a guide. Please ask your conveyancer for exact calculations.

Monthly Rates R920

Charming Family Home in Quiet Cul-de-Sac – Conveniently Located

Charming Family Home !!!

Nestled in a peaceful cul-de-sac, the property offers comfort, security, and convenience. Ideally situated close to main road access leading to Port Elizabeth and within walking distance of a nearby primary school, this home is perfect for families seeking a safe and accessible neighbourhood.

The home features three bedrooms, all fitted with built-in cupboards.

A cosy lounge flows into a functional kitchen, complemented by a full bathroom.

An indoor braai area leads out to the swimming pool.

Additional features include:

* Five air conditioning units throughout the house for year-round comfort

* Two water tanks, with one already connected for household use

Features

Pets Allowed Yes

Interior

| | |
|--------------|----|
| Bedrooms | 3 |
| Bathrooms | 3 |
| Kitchens | 1 |
| Recep. Rooms | 1 |
| Furnished | No |

Exterior

| | |
|---------------------|-------|
| Garages | 1 |
| Carports / Parkings | 1 |
| Security | Yes |
| Pool | Yes |
| Views | False |

Sizes

| | |
|-----------|---------------------|
| Land Size | 1,021m ² |
|-----------|---------------------|

