



Shane Williams
0843075148
shane@tfre.co.za



Liezel Vermaak
0845846907
liezel@tfre.co.za

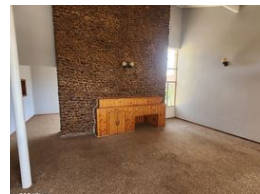
Contact TFRE Gqeberha

041 3602455

236 Cape Road
Mill Park
Gqeberha



Web Ref RL6506



R950,000

Monthly Bond Repayment R9,644.68

Calculated over 20 years at 10.75% with no deposit.

Transfer Costs R30,412.00 **Bond Costs** R23,335.00

These calculations are only a guide. Please ask your conveyancer for exact calculations.

🛏 3 🚿 1 🚗 1

Charming 3-Bedroom Home with Lovely Views and Potential – A Renovator's Dream

This delightful 3-bedroom home offers the perfect opportunity for those seeking a property with character and potential. Positioned to enjoy stunning views, the home boasts a front "stoep area" that is partly enclosed, providing a peaceful space to unwind while surrounded by fruit trees, including avocado, guava, and lemon.

Inside, the home features a spacious entrance hall, leading to a large lounge and dining area with high ceilings, offering a bright and airy feel.

The three bedrooms are comfortable, each with built-in cupboards and carpeting.

The bathroom includes a bath and basin, with a separate toilet for added convenience.

The kitchen, with built-in cupboards and vinyl flooring, awaits your personal touch, and there is a separate scullery for added practicality.

While the property is full of potential, it does...

Features

Pets Allowed Yes

Interior

Bedrooms	3
Bathrooms	1
Kitchens	1
Recep. Rooms	2
Furnished	No

Exterior

Garages	1
Carports / Parkings	1
Security	No
Pool	No
Views	True

Sizes

Land Size	786m²
-----------	-------

