



Steyn Marais
0817926588
steyn@tfre.co.za

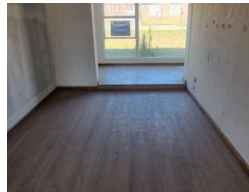
Contact TFRE Gqeberha

041 3602455

236 Cape Road
Mill Park
Gqeberha



Web Ref RL6872



R1,150,000

3 2 2

Monthly Bond Repayment R11,675.13

Calculated over 20 years at 10.75% with no deposit.

Transfer Costs R32,749.00 **Bond Costs** R25,220.00

These calculations are only a guide. Please ask your conveyancer for exact calculations.

Monthly Rates R1,100

3 Bedroom Home with 2 Bachelor Flatlets For Sale in Despatch Central.

This property is walking distance to Pick and Pay and offers:

3 Bedrooms, 2 bathrooms, dining room, separate scullery, entrance hall, covered outside braai, garage with parking for 4 vehicles, fully enclosed yard.

The property also features 2 bachelor flatlets to generate rental income.
Pre-paid electricity available.

This property needs some upgrading but with that comes a lot of possibilities, especially if you are looking to invest in property and utilize this home as an income generator.

View strictly by appointment and make an offer.

Every effort has been made to ensure the content of this advert is correct, however, no responsibility will be borne for any errors or omissions it may contain.

Features

| | | | | | |
|---------------------|-----|-----------------|-------|--------------|---------|
| Pets Allowed | Yes | | | | |
| Interior | | Exterior | | Sizes | |
| Bedrooms | 3 | Garages | 2 | Land Size | 1,027m² |
| Bathrooms | 2 | Security | No | | |
| Kitchens | 1 | Pool | No | | |
| Recep. Rooms | 2 | Views | False | | |
| Furnished | No | | | | |

