

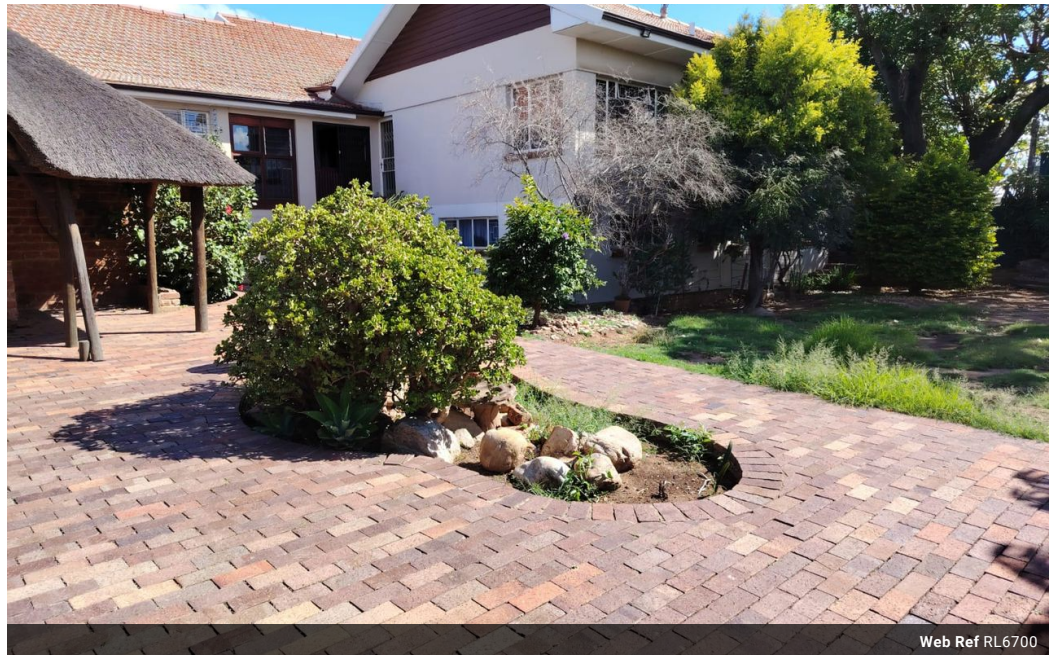


Theo Hill
0842743536
theo@tfre.co.za

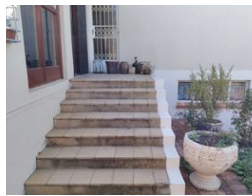
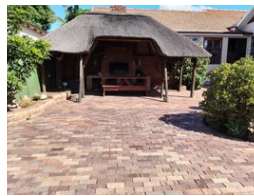
Contact TFRE Gqeberha

041 3602455

236 Cape Road
Mill Park
Gqeberha



Web Ref RL6700



R1,550,000

Monthly Bond Repayment R15,736.05

Calculated over 20 years at 10.75% with no deposit.

Transfer Costs R47,285.00 **Bond Costs** R28,990.00

These calculations are only a guide. Please ask your conveyancer for exact calculations.

4 3

Stylish & Spacious Home in the Heart of Despatch!

Stylish & Spacious Home in the Heart of Despatch!

This elegant property is ideally located—close to all amenities yet in a peaceful street. It offers everything you need for comfortable family living!

4 Bedrooms with built-in cupboards
3 Bathrooms (Main bedroom with en-suite)
Large Lounge with a Cozy Fireplace
Dining Room conveniently next to the kitchen
Spacious Kitchen with built-in cupboards, a stove, and a double eye-level oven
Scullery & Laundry Room with ample space for appliances
2 Study Rooms – ideal for working from home
Expansive Family/TV Room with air conditioning and a gas fireplace

Outdoor & Extra Features:

Covered Lapa with a built-in braai – perfect for entertaining

Additional Outside Room – ideal as a game room

Basement Area with its bathroom

Features

Pets Allowed Yes

Interior

Bedrooms	4
Bathrooms	3
Kitchens	1
Recep. Rooms	3
Studies	2
Furnished	No

Exterior

Carports / Parkings	4
Security	Yes
Pool	No
Views	False

Extras

Laundry Scullery Lapa Fireplace

