



Steyn Marais
0817926588
steyn@tfre.co.za

Contact TFRE Gqeberha

041 3602455

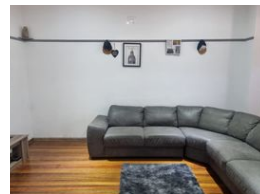
236 Cape Road
Mill Park
Gqeberha

NEW



SOLE MANDATE

Web Ref RL6871



R1,250,000

3 1

Monthly Bond Repayment R12,690.36

Calculated over 20 years at 10.75% with no deposit.

Transfer Costs R36,117.00 **Bond Costs** R27,105.00

These calculations are only a guide. Please ask your conveyancer for exact calculations.

Monthly Rates R930.5

3 Bedroom family home with Flatlet For Sale in Bothasrus, Despatch.

EXCLUSIVE SOLE MANDATE!!

This property is situated walking distance to Despatch High School and Town Centre in Bothasrus.

The main dwelling offers:

3 Bedrooms, lounge, kitchen, full bathroom, separate scullery, separate laundry, with a combination of tile and wooden flooring throughout.

The yard is fully enclosed and offers 2 separate entrance gates, roll-up garage door leading into a covered carport, storage room, outside braai and 2x 2 500L water tanks.

Pre-paid electricity available.

The flatlet offers: 1 bedroom, open plan kitchen/lounge and bathroom with separate toilet.

View strictly by appointment and make an offer.

Every effort has been made to ensure the content of this advert is correct, however, no responsibility will be borne for any errors or omissions it may contain

Features

Pets Allowed		Yes			
Interior				Exterior	
Bedrooms	3			Carports / Parkings	1
Bathrooms	1			Security	No
Kitchens	1			Pool	No
Recep. Rooms	1			Views	False
Furnished	No			Sizes	
				Land Size	815m²

