



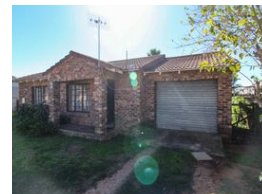
Sharron Nortier
0827830506
sharron@tfre.co.za

Contact TFRE Gqeberha
041 3602455

236 Cape Road
Mill Park
Gqeberha



Web Ref RL6773



R750,000

🛏️ 2 🚿 2 🏠 1

Monthly Bond Repayment R7,614.22

Calculated over 20 years at 10.75% with no deposit.

Transfer Costs R25,898.00 **Bond Costs** R19,565.00

These calculations are only a guide. Please ask your conveyancer for exact calculations.

Monthly Rates R660

Exclusive dual mandate - Priced to Sell, Call all investors !!!

Charming 2-Bedroom House in the Heart of Town – Ideal Starter Home,

Nestled in a quiet street right in the centre of town, this inviting 2-bedroom house offers the perfect opportunity for first-time buyers or those looking to scale down. With a bit of love and vision, this property is ready to be transformed into a place you'll proudly call home.

Ideal for newlyweds or anyone stepping into the property market, the home features a spacious lounge, a functional kitchen with built-in cupboards, and two well-sized bedrooms with built-in cupboards.

There are two bathrooms, adding convenience for family or guests.

Outside, you'll find a generous yard—perfect for future extensions, gardening, or simply enjoying the outdoors. A single garage adds secure parking or additional storage space.

Whether you're starting or simplifying...

Features

Pets Allowed		Yes			
Interior				Exterior	
Bedrooms	2			Garages	1
Bathrooms	2			Security	No
Kitchens	1			Pool	No
Recep. Rooms	1			Views	False
Furnished	No				
				Sizes	
				Land Size	590m²

