



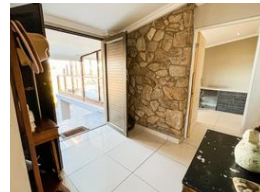
**Sharron Nortier**  
0827830506  
sharron@tfre.co.za

Contact TFRE Gqeberha  
**041 3602455**

236 Cape Road  
Mill Park  
Gqeberha



Web Ref RL6185



**R2,590,000**

🛏️ 4 🚿 2 🏠 4

**Monthly Bond Repayment** R26,294.43

Calculated over 20 years at 10.75% with no deposit.

**Transfer Costs** R122,920.00 **Bond Costs** R38,415.00

These calculations are only a guide. Please ask your conveyancer for exact calculations.

### Stunning and stylish family home!

Welcome to this exquisite property situated in the heart of Despatch with breathtaking views over this beautiful and historic town.

This home allows an abundance of natural light. Designed with added attention to detail and modern finishes. From the moment that you step inside you will immediately feel welcomed and invited.

The property boasts 4 bedrooms with built-in cupboards that lead to your sparkling pool. 2.5 Bathrooms (2 of which are en-suite).

The dining room features open plan living at its best onto the beautiful kitchen that serves as the heart of a home, equipped with top-of-the-line appliances such as a Smeg stove, kitchen island with granite top, and scullery area.

Formal sunken lounge with fireplace and separate TV room, bonus study area for the work-from-home parent. Additionally, this home offers a...

### Features

Pets Allowed		Yes			
Interior				Exterior	
Bedrooms	4			Garages	4
Bathrooms	2			Security	Yes
Kitchens	1			Pool	Yes
Recep. Rooms	3			Views	False
Studies	1				
Furnished	No				
				Sizes	
				Land Size	1,669m²

