

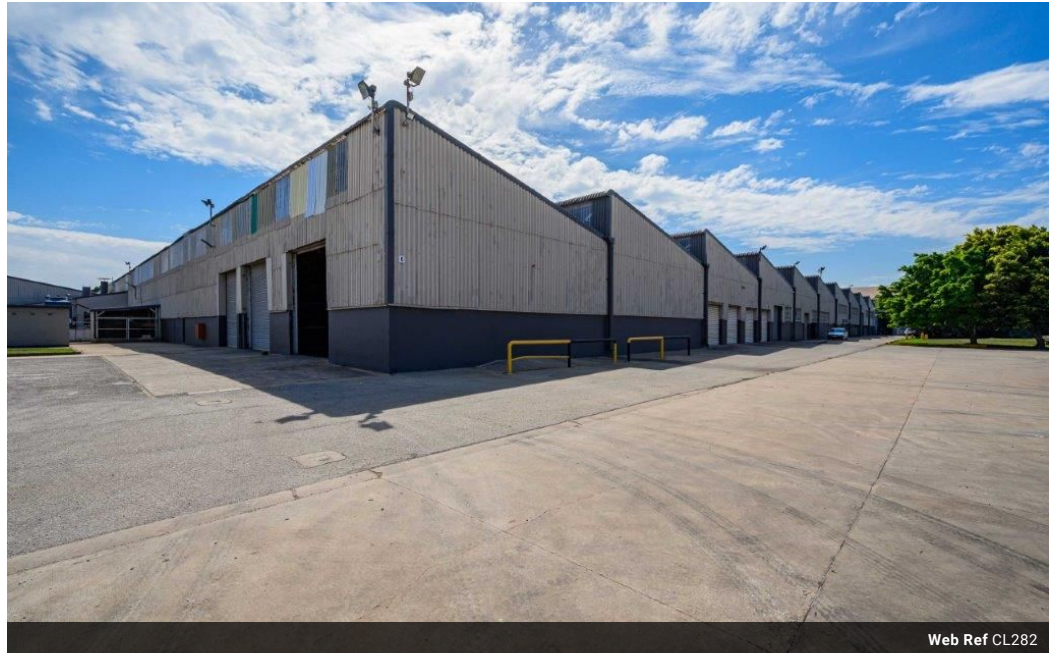


Kwame Nicol
0780531462
kwame@tfre.co.za

Contact TFRE Gqeberha

041 3602455

236 Cape Road
Mill Park
Gqeberha



Web Ref CL282



R83,000,000

0 0

CALLING ALL INVESTORS!!

FULL PROPERTY SIZE : 88885.76sqm, Building 27813sqm, Offices 2761sqm, Warehouse 23580sqm, Markman Industrial. Port Elizabeth. Close to Coega Development Zone.
Guard houses/Electric fence/Alarm systems/250kva generator/Three main gates/Emergency sprinkler/Super link Truck Access/7 service dock levelers/6 x 5000-litre water tanks/Off grade loading/On grade loading/Office air conditioning/1 overhead crane (7 ton)/3 phase electricity. Exclusive railway siding.

Every effort has been made to ensure the content of this advert is correct, however, no responsibility will be borne for any errors or

Features

Zoning Industrial

Sizes

Floor Size 27,813m²