



**Kwame Nicol**  
0780531462  
kwame@tfre.co.za

Contact TFRE Gqeberha

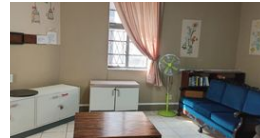
041 3602455

236 Cape Road  
Mill Park  
Gqeberha

NEW



Web Ref CL305



POA

0 0

### CALLING ALL INVESTORS

This building is situated at the heart of the CBD, Central, Port Elizabeth.

There are 15 rooms for 23 students.

4 Retail shops with tenants.

Easy to convert the retail space into more rooms for students.

Very secure and well-maintained.

Close to all amenities with easy access to transport and services.

Every effort has been made to ensure the content of this advert is correct, however, no responsibility will be borne for any errors or

### Features

**Zoning** Commercial

**Sizes**

Floor Size 400m²

