

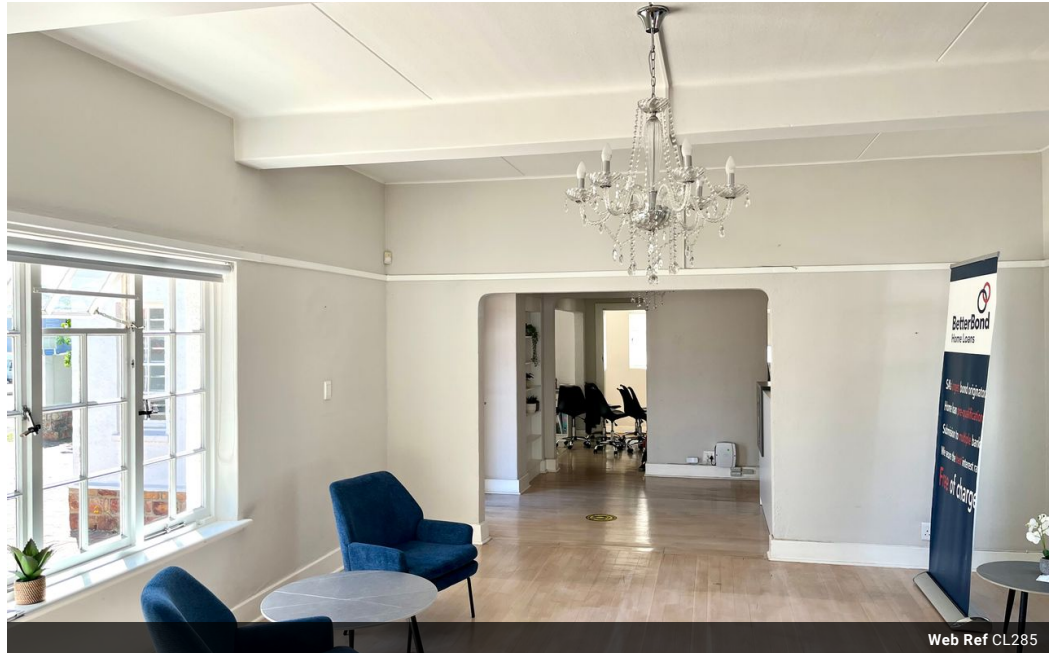


Kwame Nicol
0780531462
kwame@tfre.co.za

Contact TFRE Gqeberha

041 3602455

236 Cape Road
Mill Park
Gqeberha



Web Ref CL285



R3,190,000

0 0

CALLING ALL INVESTORS

Strategically situated, double story office building by the robots right at 217 Cape Road, Mill Park with existing tenants.

Downstairs have three offices, a kitchen and a restroom.

Upstairs are five offices, a board room, a kitchen, and a restroom.

Another building with an office at the back.

Space to park 8 cars or more.

Very secure and close to all amenities.

Every effort has been made to ensure the content of this advert is correct, however, no responsibility will be borne for any errors or

Features

Zoning Commercial

Sizes

Floor Size 240m²